

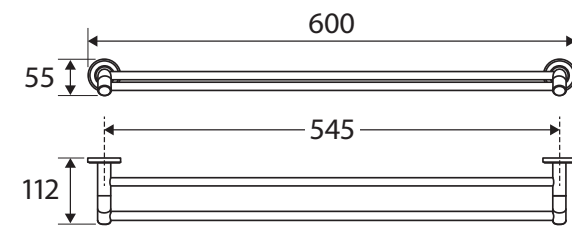
Axle®

600MM DOUBLE TOWEL RAIL

Features

- Unique Industrial cross-hatched cover plates
- Super strong 5-point wall mount
- Adjustable no-spin rail design - rails can be cut to desired length
- Sloping arm design makes it easier to hang towels
- Stainless steel and zinc construction
- Hex key not required for mounting (only used to secure rail)
- Fully concealed fixings
- Upgrade the look with different cover plate styles and finishes
- All products come with matching round Axle cover plates as standard

Please Note: These products may have a visible Fienza or Watermark logo.



(Adjustable – cut to length)

Available in



Chrome
8310860



Mixed finishes available. See our website for details.

Cleaning & Care

- Regularly clean with mild soapy water using a microfibre cloth.
- In highly polluted or coastal locations, we recommend cleaning 2-3 times per week.
- Do not use harsh detergents, bleach, cream cleaners or citrus based cleaners. These substances are abrasive and will damage the surface.
- Do not use undue pressure and wipe in one direction only

While we aim to ensure specifications are correct at the time of publication, Fienza reserves the right to make modifications without prior notice. Physical colour may vary from image shown. All measurements are shown in millimetres. Always use physical product measurements for mark-ups and roughing-in as the technical drawing may differ from actual product received.