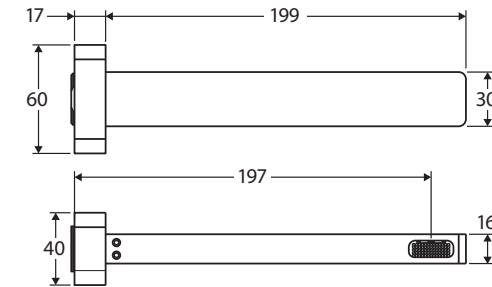
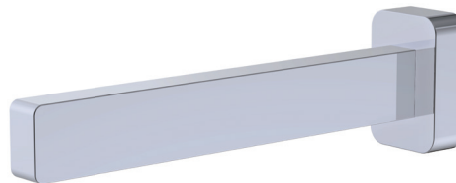


Sansa®

BATH OUTLET

Features

- Wall mounted, fixed position
- Push-fit installation
- Made from solid brass
- Female ½" BSPP inlet
- WELS rating not required



Available in



Chrome
229115



PVD
Brushed Nickel
229115BN



PVD
Gun Metal
229115GM



Electroplated
Matte Black
229115B



PVD
Urban Brass
229115UB



Mixed finishes
available. See our
website for details.

Cleaning & Care

- Regularly clean with mild soapy water using a microfibre cloth.
- In highly polluted or coastal locations, we recommend cleaning 2-3 times per week.
- Do not use harsh detergents, bleach, cream cleaners or citrus based cleaners. These substances are abrasive and will damage the surface.
- Do not use undue pressure and wipe in one direction only.



While we aim to ensure specifications are correct at the time of publication, Fienza reserves the right to make modifications without prior notice. Physical colour may vary from image shown. All measurements are shown in millimetres. Always use physical product measurements for mark-ups and roughing-in as the technical drawing may differ from actual product received.