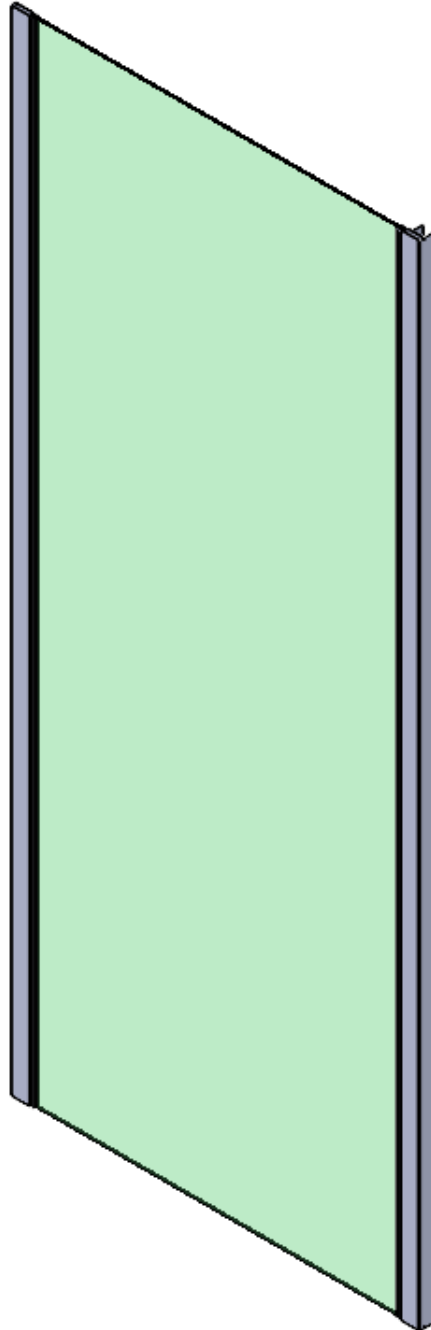


ARP installation instruction

Alpine Return Panel



Please read these instructions carefully and retain them for future reference.

****1. For ease and safety, we recommend that two people assemble this product. ****

****2. Protect shower tray surfaces at all times. ****

****3. Exposed glass corners or edges must not contact hard surfaces at any time. ****

****4. Check for cables, pipes, etc. before drilling walls. ****

****5. Ensure that all surfaces are dry, clean, and free of loose debris or dust. ****

****6. Unpack the goods with care. (Small parts can become lodged in the packaging and inadvertently discarded.) Check the parts supplied against the parts and fittings listed herein. Damaged parts or omissions may be resolved by calling the Alpine Bathrooms Helpline. ****

****7. While precautions are taken in manufacture, care must be taken when handling as rail ends may have sharp edges. ****

****8. Before commencing, check: ****

* a) that the shower tray is level and completely sealed to the finished/tiled walls.

* b) that the finished walls are sound and free of cracks, loose tiles, or grout.

****9. AFTER INSTALLATION, DO NOT "WET" ENCLOSURE FOR 48 HOURS TO ENSURE FULL CURE OF THE SILICONE SEALANT). ****

****General Care and Maintenance****

Provided this product is installed and operated in accordance with these instructions, problems should not arise. However, should maintenance be required, it should be carried out by a competent person with reference to these instructions. Before any work is carried out, the root cause of the problem must be identified. Alpine service engineers are available if necessary to consult or carry out remedial work.

****Cleaning****

(Every one to two weeks depending on local water {hardness} conditions)

All glass panels in this product have a hydrophobic coating aiding "runoff" of water droplets, reducing the need for frequent cleaning.

For best appearance and product life, however, regular cleaning is recommended.

Use ONLY mild soap or detergent solutions to clean. Rinse with water, squeegee glass panels, and wipe frames dry with a soft cloth. Under no circumstances should abrasive, caustic, or scouring products be used. Non-compliance with these cleaning instructions may cause decorative finishes to deteriorate and could adversely affect safe operation of the enclosure.

****Limescale****

- Should a build up of limescale occur, remove using a 50:50 solution of white vinegar and water applied with a soft cloth and rinsed/dried thoroughly afterwards.

****Daily Care****

To prevent the build up of limescale, do not allow water droplets to dry on glass or frames. After showering, rinse with water, remove droplets from glass with a squeegee, and wipe frame with a soft cloth.

****What to do if something goes wrong: ****

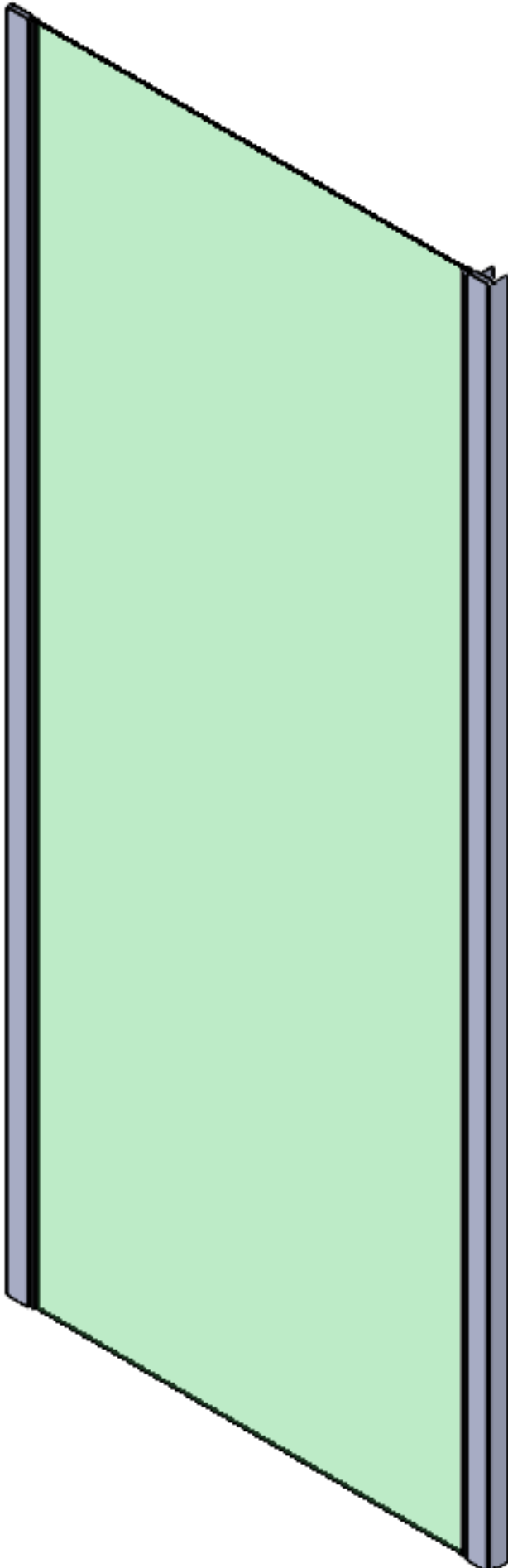
Should the product not function correctly on initial use, firstly, contact the installer to check that unit installation and commissioning are in accordance with these instructions. Should this not resolve difficulties or should performance decline, consult the "Troubleshooting" section to see if simple home maintenance is needed.

Alternatively, Alpine staff can assist, or if necessary arrange for a service engineer to visit.

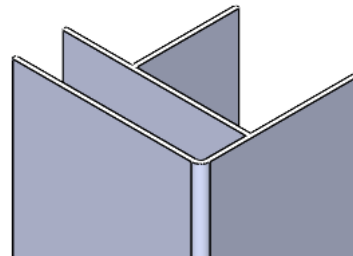
****Spares: ****

We maintain extensive spare part stocks. Spares can be ordered or purchased from your local Alpine stockist.

Parts Supplied in this box:



1 x Wall Profile



1 x Corner Profile



8 x 12mm Pan Head Self Tapping Screws



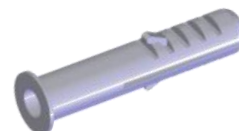
8 x Screw Cup Washers



8 x Screw Cover Cap



4 x 40mm Pan Head Self Tapping Screws



4 x Wall Plugs

SIZE	Adjustment Range A
800 (080)	745 – 805mm
900 (090)	845 – 905mm
1000 (100)	945 – 1005mm
1100 (110)	1045 – 1105mm
1200 (120)	1145 – 1205mm

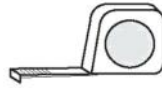


Normal size A



ARPWP75 adjustment can add 40mm
(sold separately see page 6)

Tools Required



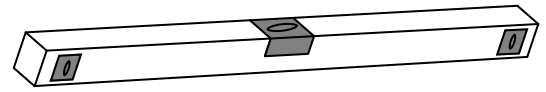
Tape Measure



Pencil



3mm HSS
drill bit



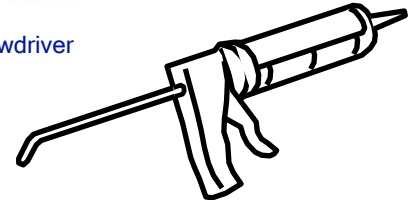
Spirit Level (with vertical 'bubble')



Power drill &
8mm masonry bit

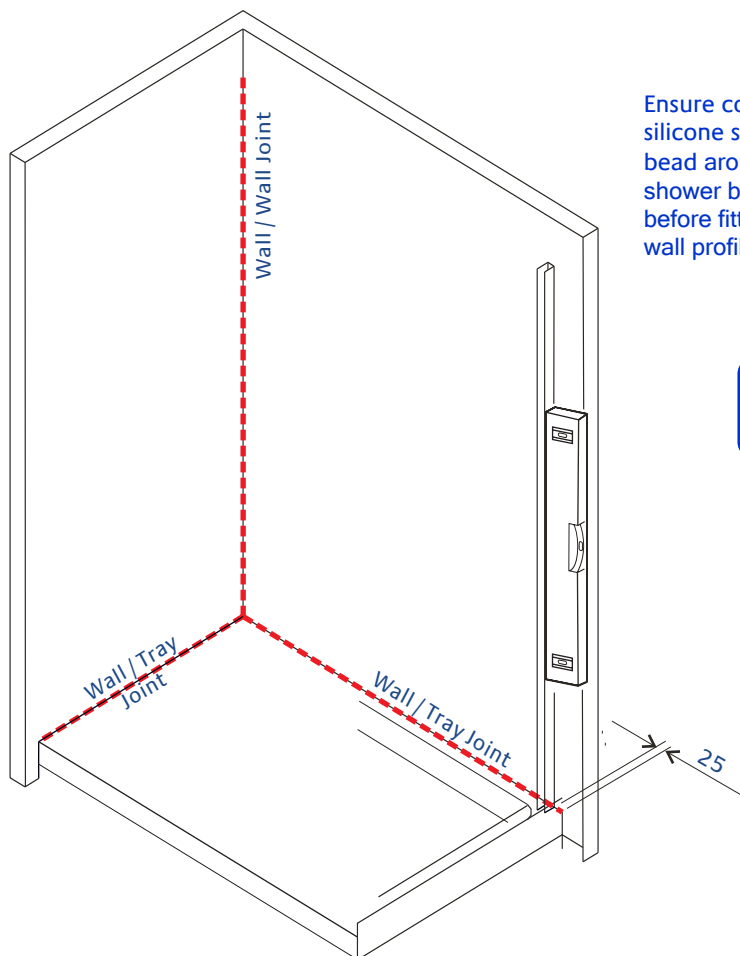


Phillips Screwdriver

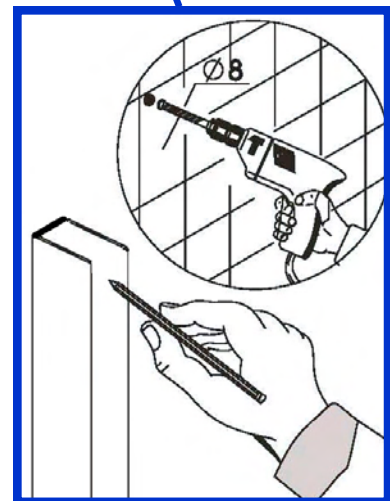
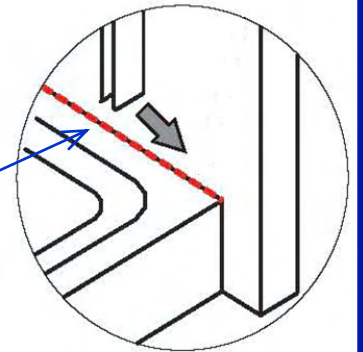


Good quality silicone
sealant & applicator

Step 1: Fix the wall profile



Ensure continuous
silicone sealant
bead around your
shower base
before fitting the
wall profile.

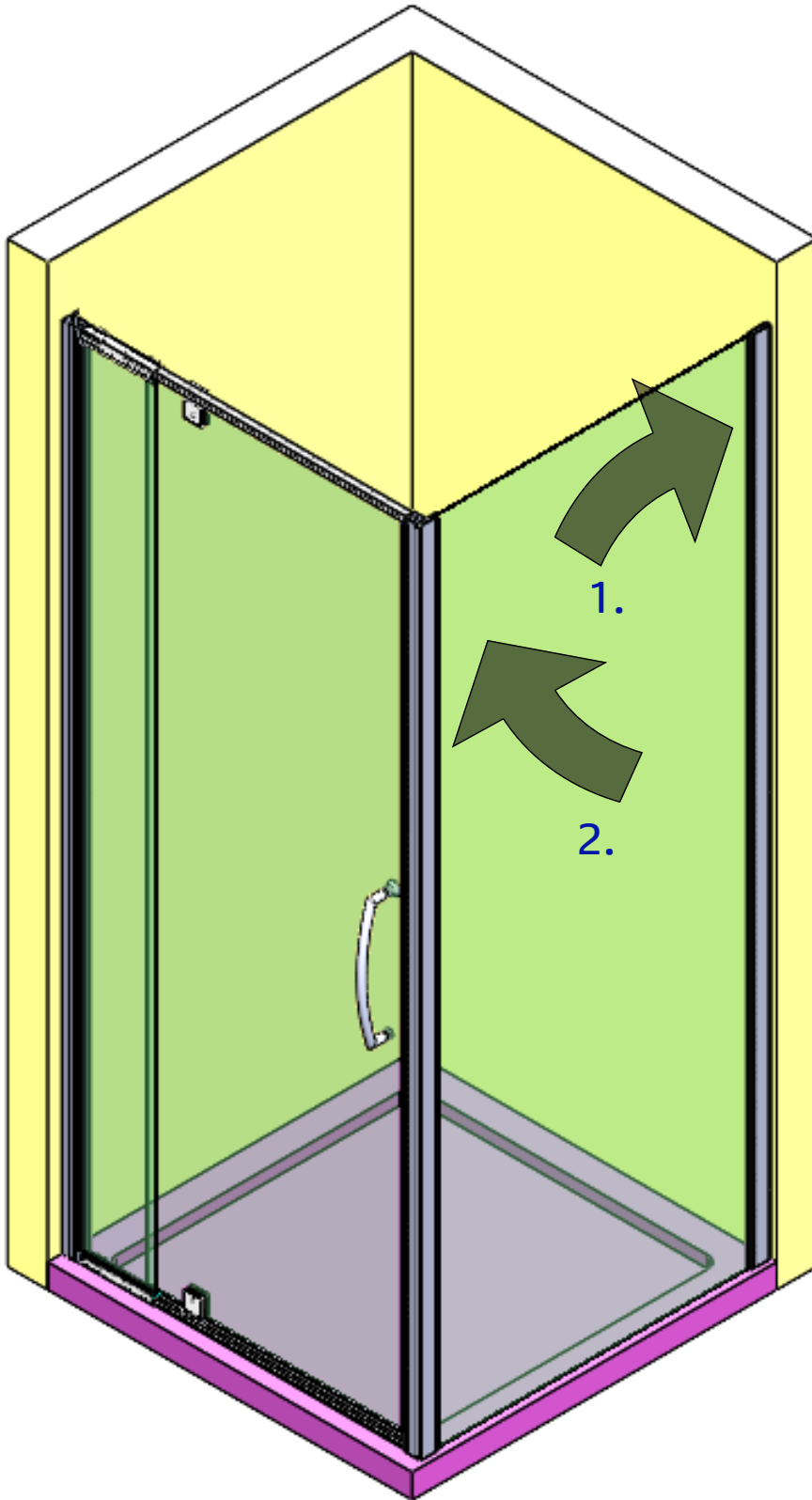


Measure, plumb & mark wall profile positions, drill, plug & affix the 1 wall profile only at this time using the 4 x 40mm pan head screws and wall plugs supplied.

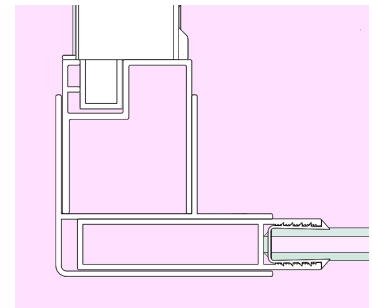
Position the Door.

Refer to respective shower door installation instructions for door assembly.

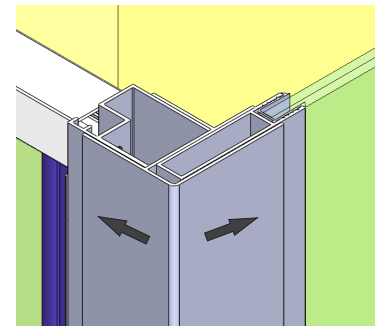
Door should be positioned loosely in its wall profile as shown ~ DO NOT drill & screw until final unit position has been determined.



Shower Door

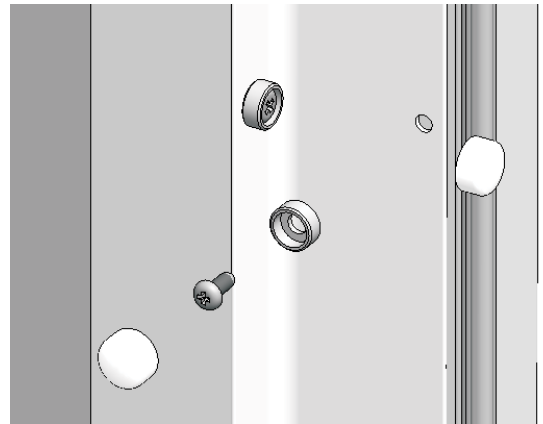
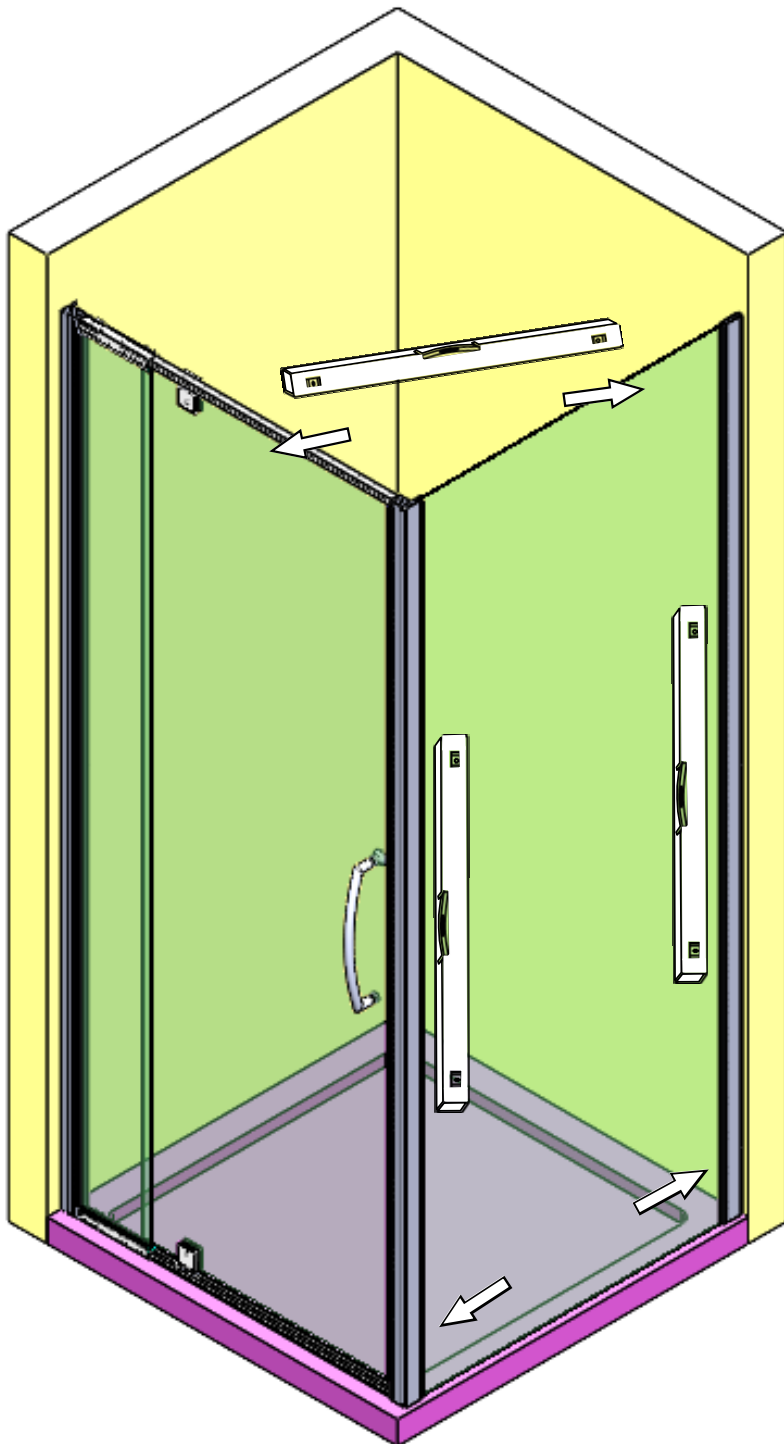


Return Panel



1. With the corner profile in position on the return panel, slide the return panel into the fixed wall profile.
2. Carefully lift the door into position.
3. To ensure correct sizing, fit corner post such that return panel sits behind shower door as indicated. The door and return panel may be moved as shown by the arrows above to assist assembly.

Lets get the shower level and secure it to the profiles



8x Screw Cup Washers



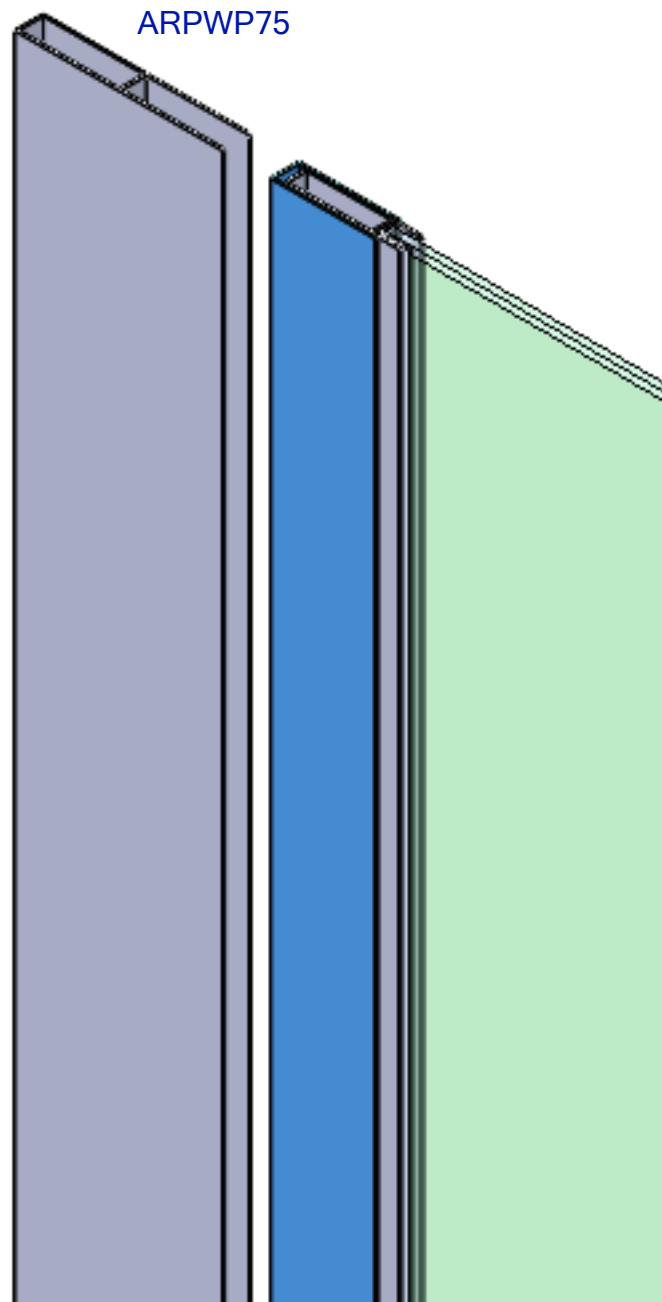
8 x Screw Cover Caps



8 x 12 mm pan screws

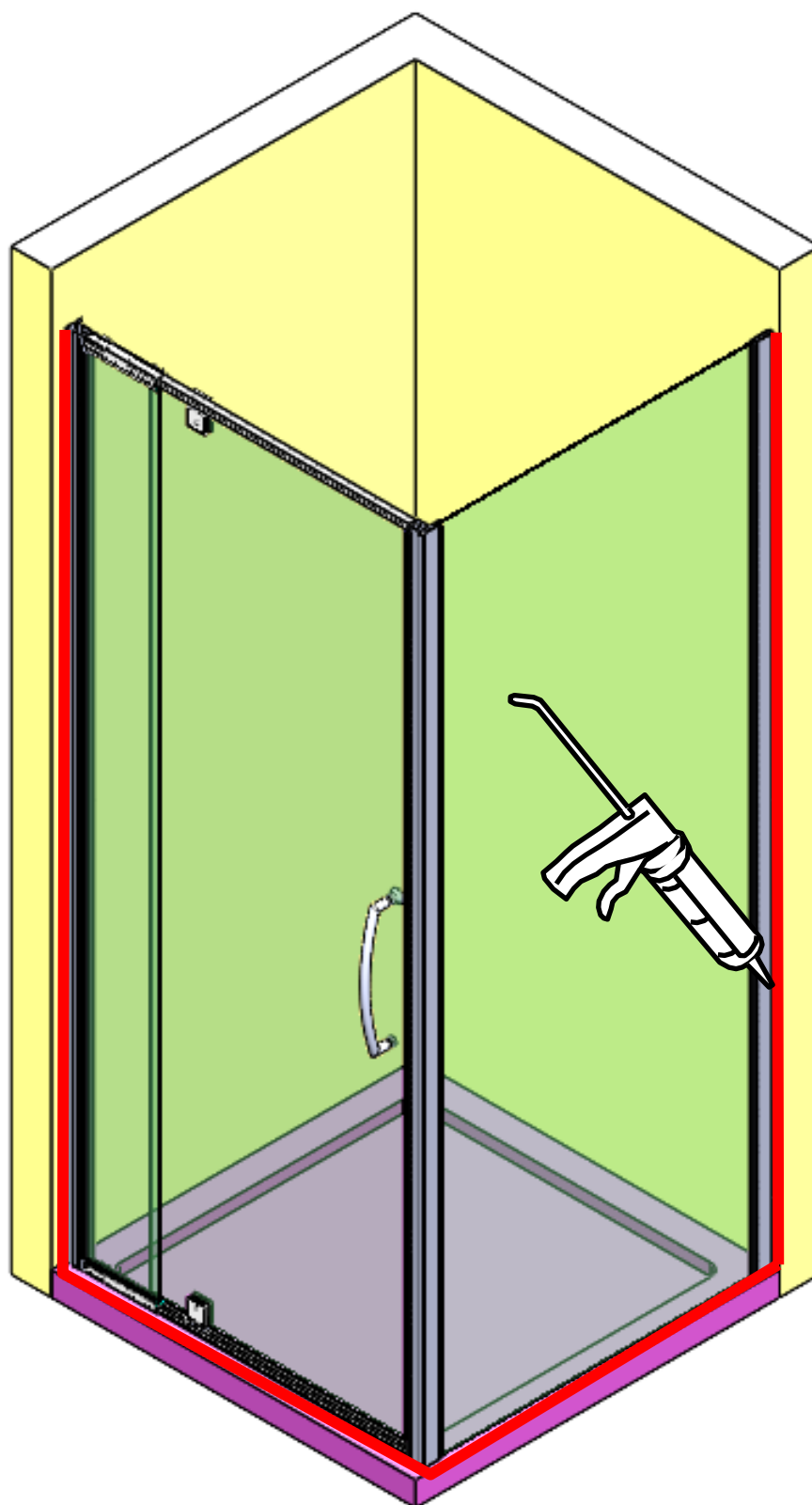
1. Centre the door and return in the wall profiles and ensure the frame is level and plumb.
2. From the inside of the shower using the wall profile holes as a guide drill (dia 3mm) holes into the return panel frame one at a time, then screw in the supplied 12mm screws and screw cup washers after drilling each hole. Repeat this process on the corner profile.
3. Push on the screw cover caps onto all the cup washers,

Optional Extra 40mm Wall Extension Profile



As standard your Alpine Return Panel will give you 60mm of adjustment. 30mm on the wall profile and 30mm on the corner profile. If you find that this isn't enough to meet your requirements you can purchase a ARPWP75 which is an extended wall profile that will increase your adjustment by an additional 40mm

Almost there, it's time to seal your shower



Use of good quality silicone sealant.
Cleaning / degreasing of all joint areas is recommended. Apply continuous
silicone sealant bead EXTERNALLY ONLY