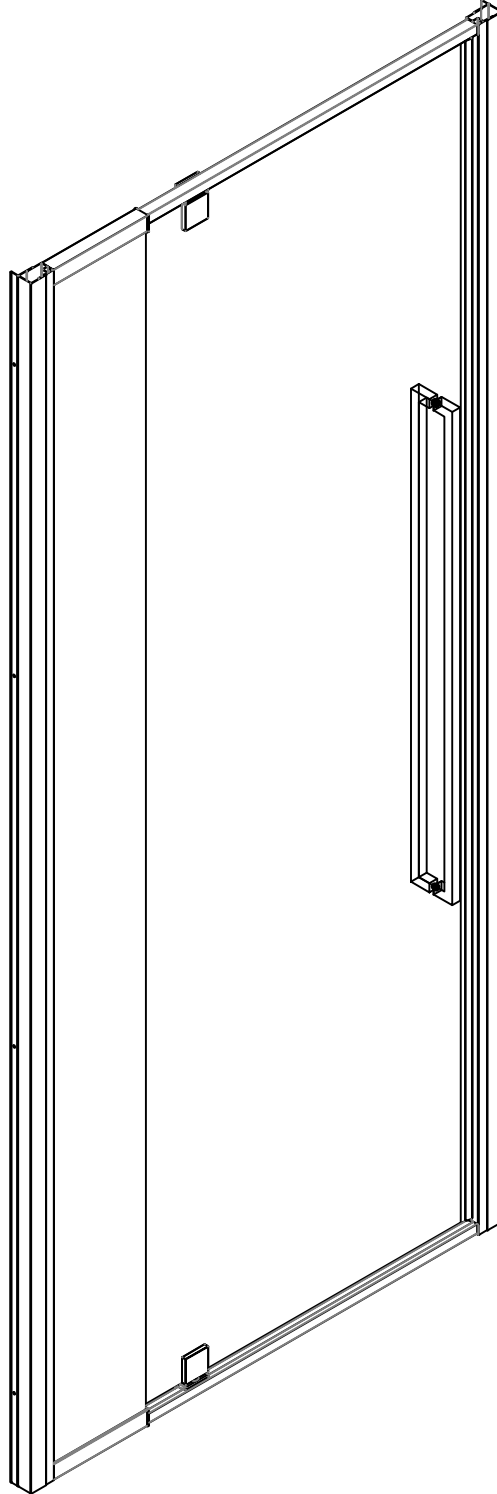


# APD Installation Instructions

## Alpine Pivot Door



[alpinekb.au](http://alpinekb.au)



WEST AUSTRALIAN  
OWNED & OPERATED  
MANUFACTURING

Please read these instructions carefully and retain them for future reference.

**\*\*1. For ease and safety, we recommend that two people assemble this product. \*\***

**\*\*2. Protect shower tray surfaces at all times. \*\***

**\*\*3. Exposed glass corners or edges must not contact hard surfaces at any time. \*\***

**\*\*4. Check for cables, pipes, etc. before drilling walls. \*\***

**\*\*5. Ensure that all surfaces are dry, clean, and free of loose debris or dust. \*\***

**\*\*6. Unpack the goods with care. (Small parts can become lodged in the packaging and inadvertently discarded.) Check the parts supplied against the parts and fittings listed herein. Damaged parts or omissions may be resolved by calling the Alpine Bathrooms Helpline. \*\***

**\*\*7. While precautions are taken in manufacture, care must be taken when handling as rail ends may have sharp edges. \*\***

**\*\*8. Before commencing, check: \*\***

\* a) that the shower tray is level and completely sealed to the finished/tiled walls.

\* b) that the finished walls are sound and free of cracks, loose tiles, or grout.

**\*\*9. AFTER INSTALLATION, DO NOT "WET" ENCLOSURE FOR 48 HOURS TO ENSURE FULL CURE OF THE SILICONE SEALANT). \*\***

**\*\*General Care and Maintenance\*\***

Provided this product is installed and operated in accordance with these instructions, problems should not arise. However, should maintenance be required, it should be carried out by a competent person with reference to these instructions. Before any work is carried out, the root cause of the problem must be identified. Alpine service engineers are available if necessary to consult or carry out remedial work.

**\*\*Cleaning\*\***

(Every one to two weeks depending on local water {hardness} conditions)

All glass panels in this product have a hydrophobic coating aiding "runoff" of water droplets, reducing the need for frequent cleaning.

For best appearance and product life, however, regular cleaning is recommended.

Use ONLY mild soap or detergent solutions to clean. Rinse with water, squeegee glass panels, and wipe frames dry with a soft cloth. Under no circumstances should abrasive, caustic, or scouring products be used. Non-compliance with these cleaning instructions may cause decorative finishes to deteriorate and could adversely affect safe operation of the enclosure.

**\*\*Limescale\*\***

- Should a build up of limescale occur, remove using a 50:50 solution of white vinegar and water applied with a soft cloth and rinsed/dried thoroughly afterwards.

**\*\*Daily Care\*\***

To prevent the build up of limescale, do not allow water droplets to dry on glass or frames. After showering, rinse with water, remove droplets from glass with a squeegee, and wipe frame with a soft cloth.

**\*\*What to do if something goes wrong: \*\***

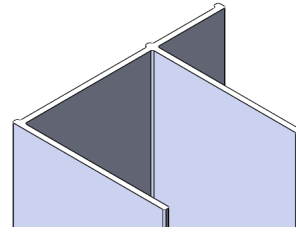
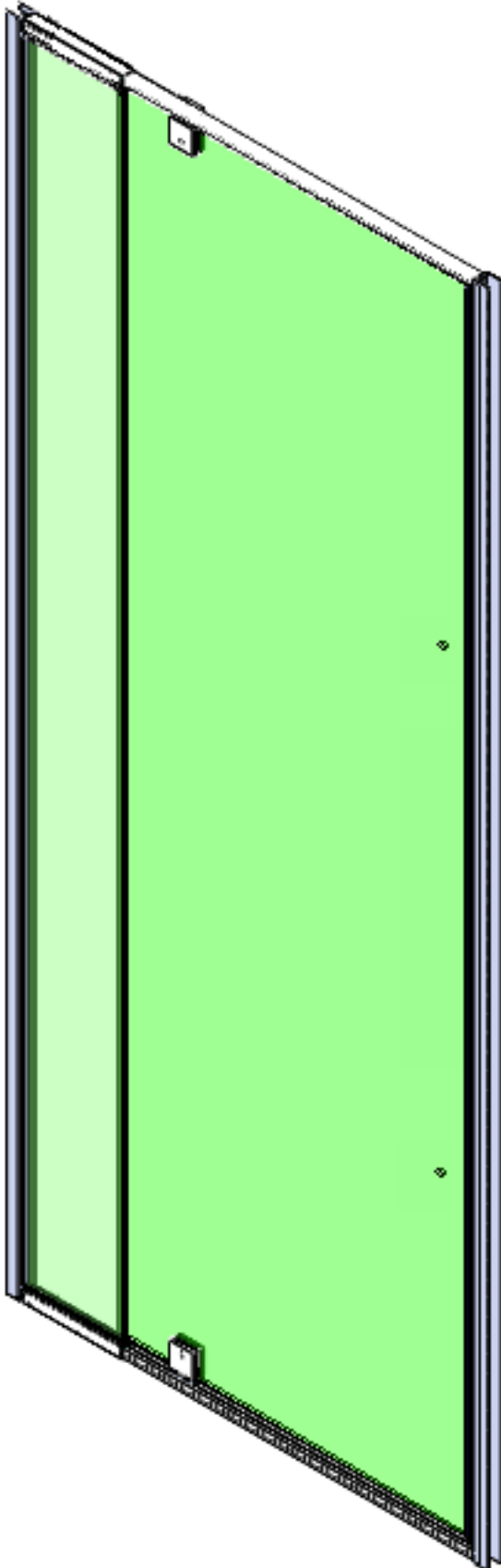
Should the product not function correctly on initial use, firstly, contact the installer to check that unit installation and commissioning are in accordance with these instructions. Should this not resolve difficulties or should performance decline, consult the "Troubleshooting" section to see if simple home maintenance is needed.

Alternatively, Alpine staff can assist, or if necessary arrange for a service engineer to visit.

**\*\*Spares: \*\***

We maintain extensive spare part stocks. Spares can be ordered or purchased from your local Alpine stockist.

**Parts Supplied in this box:**



**2 x Wall Profiles**



**1 x Door Handle**



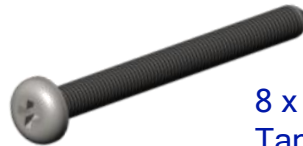
**12 x 12mm Pan Head Self Tapping Screws**



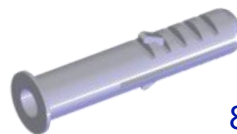
**20 x Screw Cup Washers**



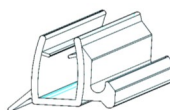
**20x Screw Cover Caps**



**8 x 40mm Pan Head Self Tapping Screws**



**8 x Wall Plugs**



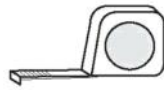
**1 x Bottom of the Door Drip Seal**

SIZE	Adjustment Range A
900 (090)	805 – 905mm
1000 (100)	905 – 1005mm
1100 (110)	1005 – 1105mm
1200 (120)	1105 – 1205mm

### Adjustment Range A

Alpine Pivot Doors can be adjusted from 0-100mm. This is achieved with 15mm of adjustment where the door meets each wall profile and 70mm adjustment with sliding in and out the top and bottom rail of the door frame.

### Tools Required



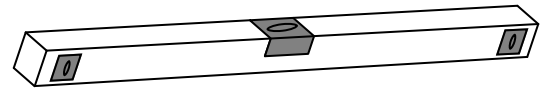
Tape Measure



Pencil



3mm HSS drill bit



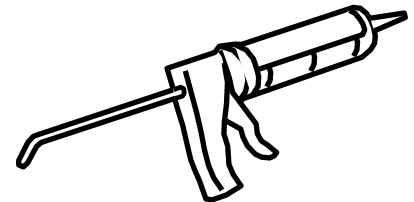
Spirit Level (with vertical 'bubble')



Phillips Screwdriver

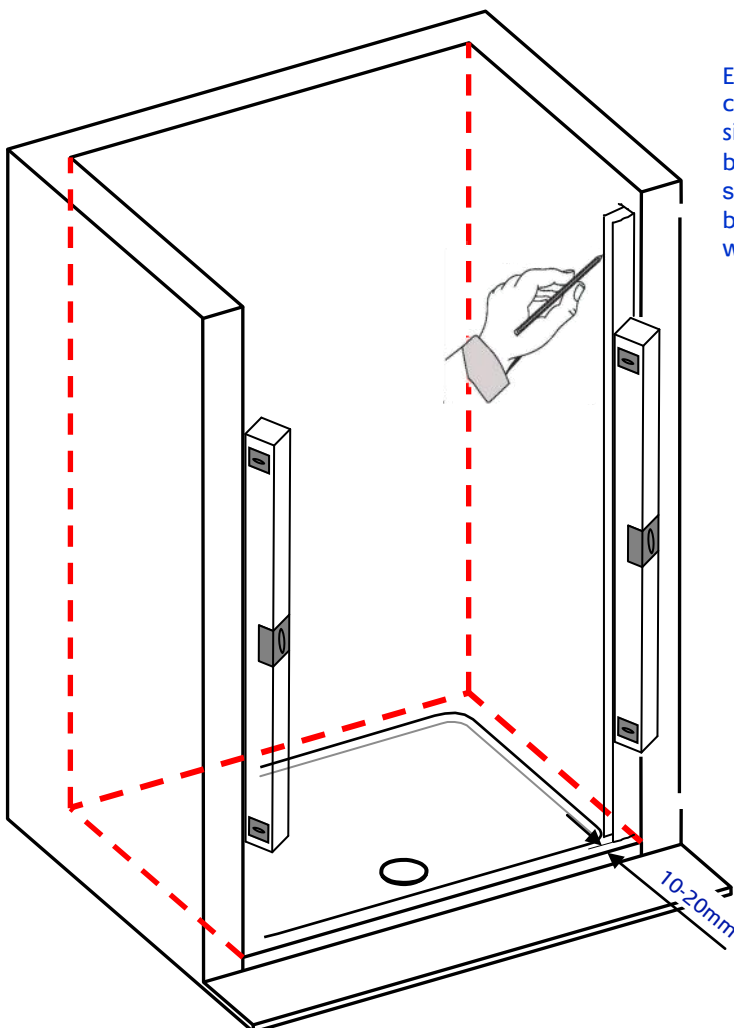


Power drill with 8mm masonry drill bit

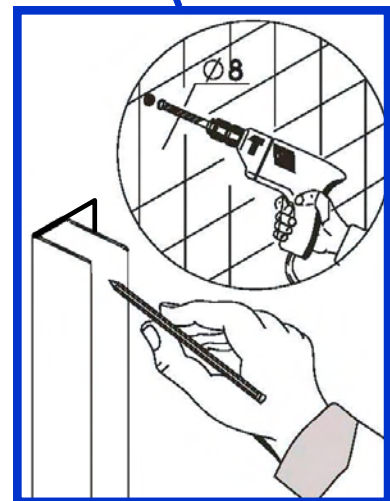
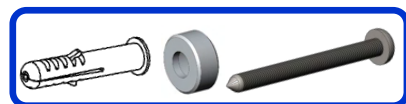
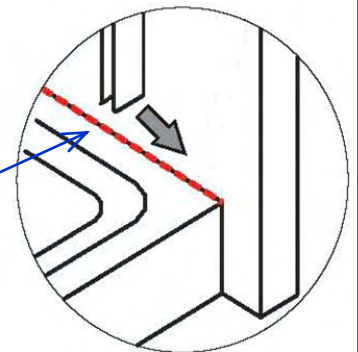


Good quality silicone sealant & applicator

### Step 1: Fix the first wall profile to the wall

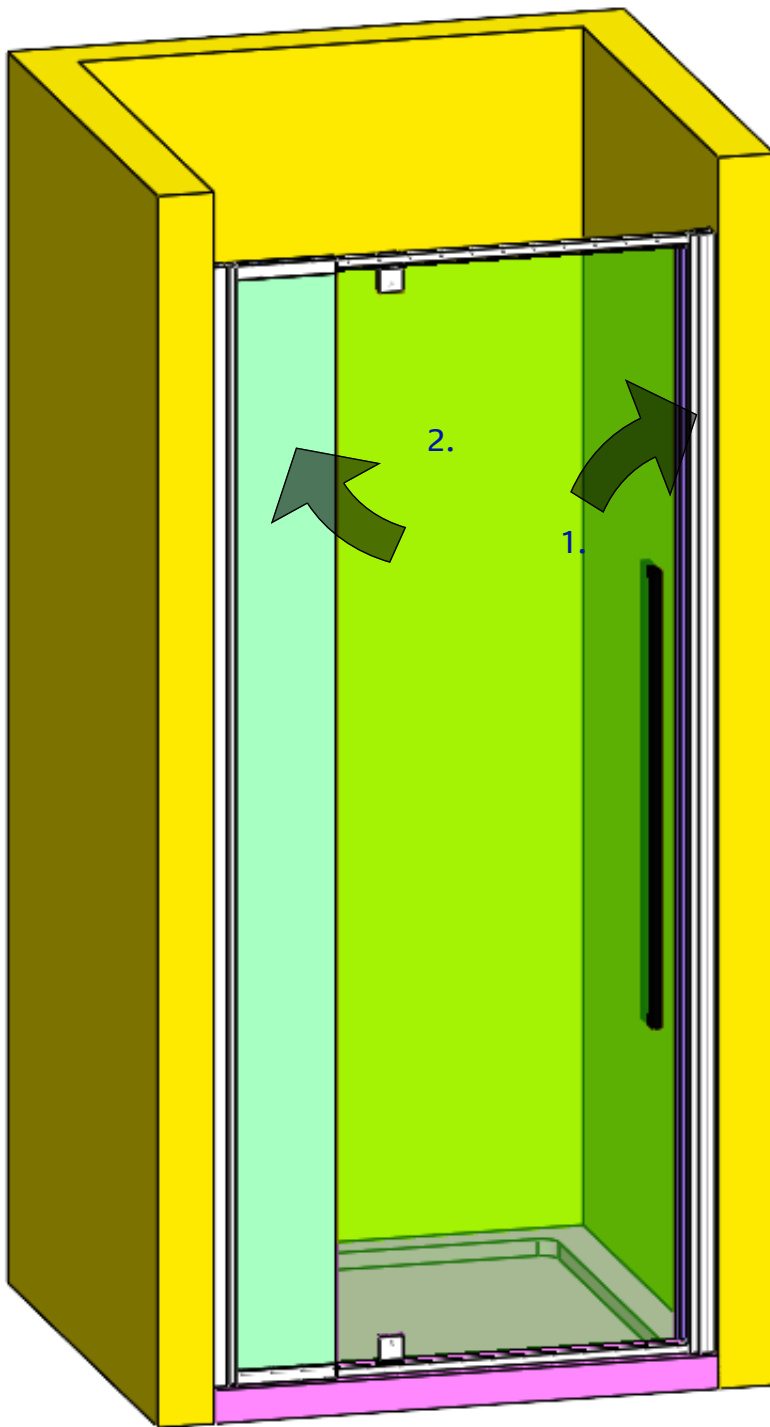


Ensure you have a continuous silicone sealant bead around your shower base before fitting the wall profiles

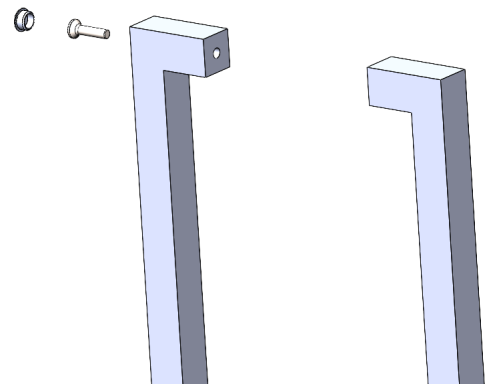


Wall profile orientation : Mounting holes go to the inside of the shower (wet area). Measure, plumb & mark wall profile positions, drill, plug & affix 1 wall profile only at this time

**Step 2: Install The Door.** Alpine Pivot Doors are fully reversible and can be installed with the handle on either the left or right hand side.



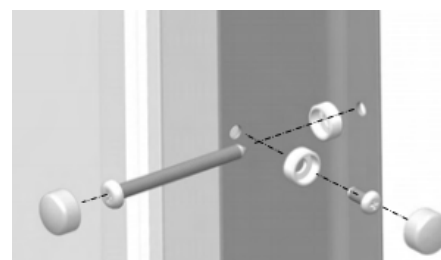
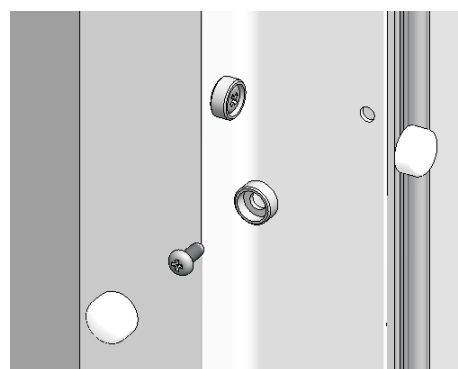
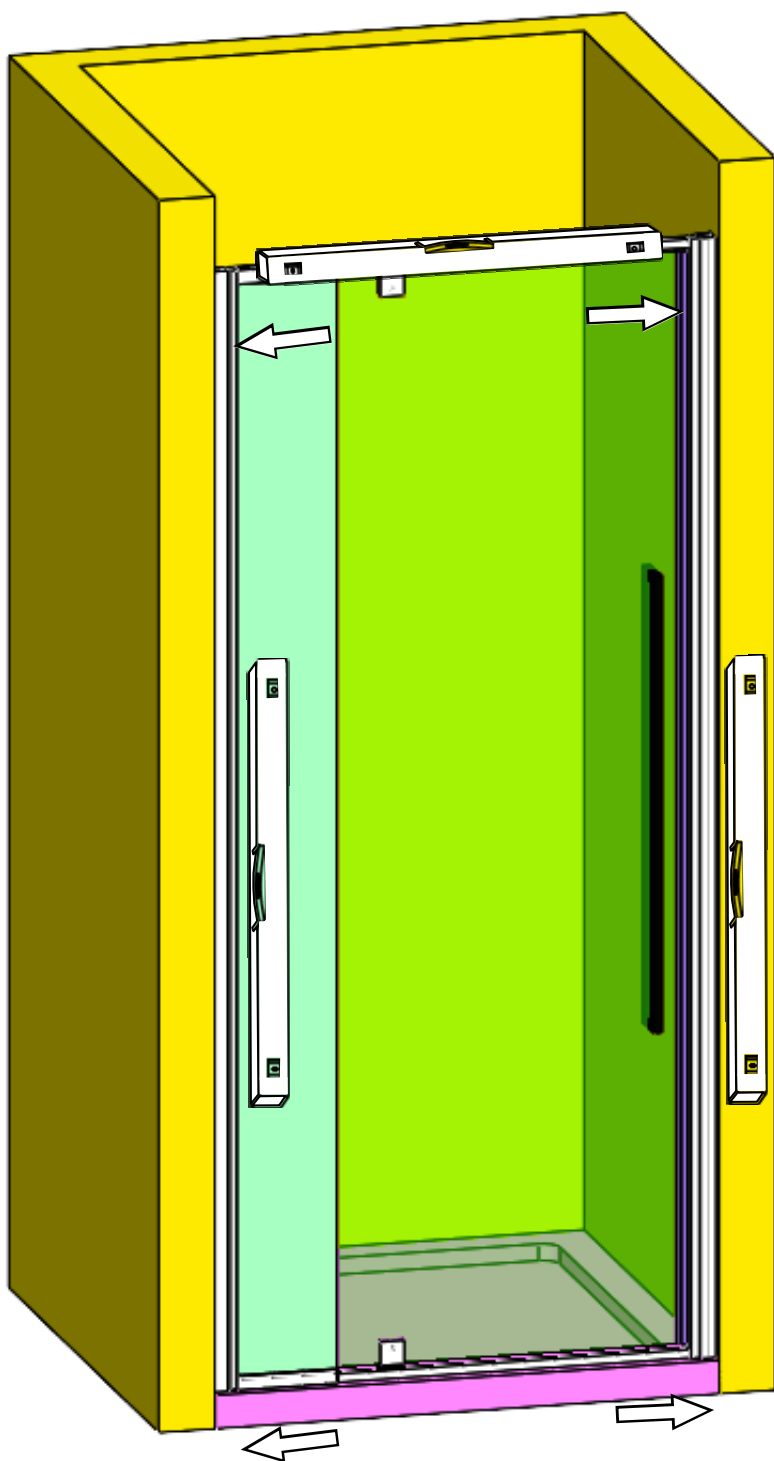
Once the door is in place you can attach the handle to the pivot door



Your pivot door is pre-assembled so to begin this process start with inserting the second (uninstalled) wall profile into the edge of the pivot door frame.

1. Carefully lift door into place and push it into fixed wall profile.
2. Using the adjustment in the wall profiles and top / bottom rails carefully slide, push back and align the door into place.
3. Affix the second wall profile to the wall using 4 x 40mm long screws and cup washers.

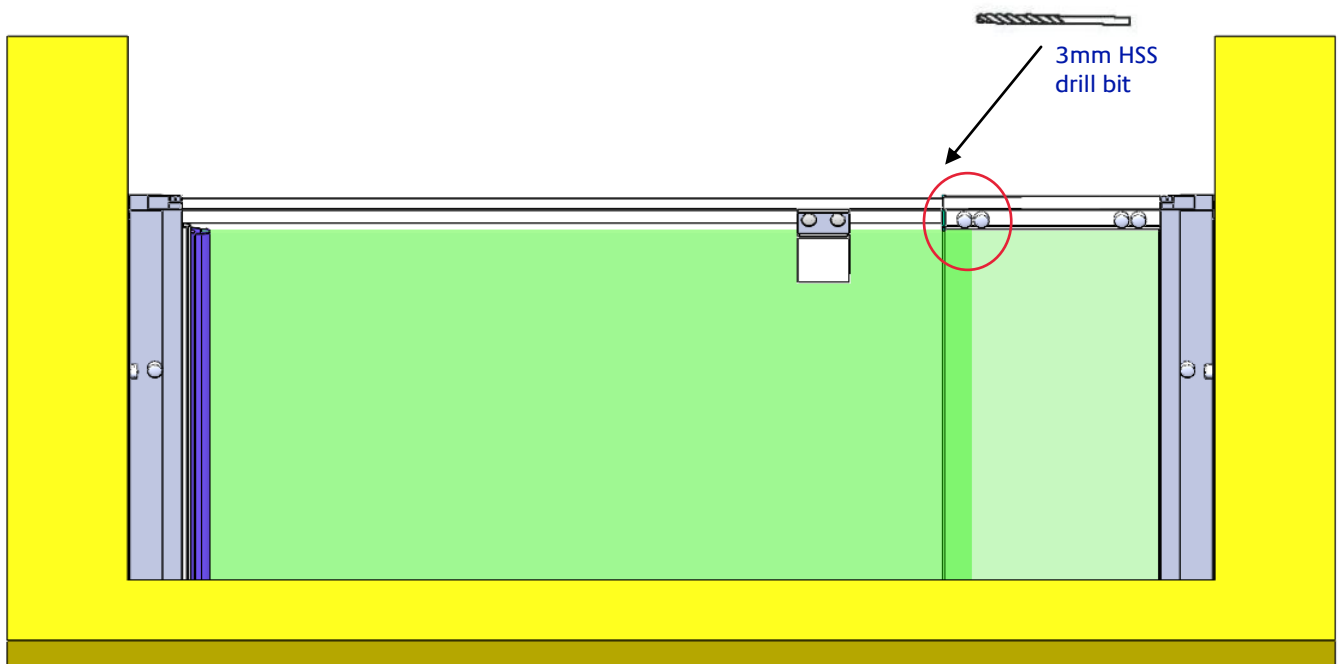
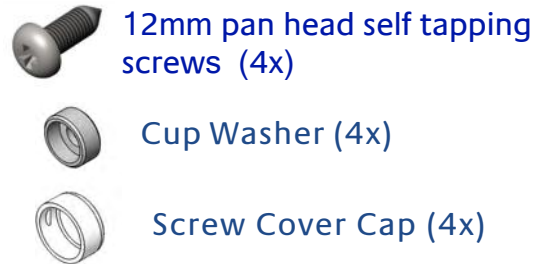
Lets get this door level and fix it to the wall profiles



1. Centre the door in the wall profiles and ensure the frame is level and plumb. Test the door pivots freely and the magnetic seal holds and is in contact over the full height of the door.
2. From the inside of the shower door using the wall profile holes as a guide drill (dia 3mm) holes into the door frame one at a time, then screw in the supplied 12mm screws and screw cup washers after drilling each hole. Repeat this process 8 times (4 per wall profile)
3. Push on the screw cover caps onto all the cup washers, including all the wall profile screws.

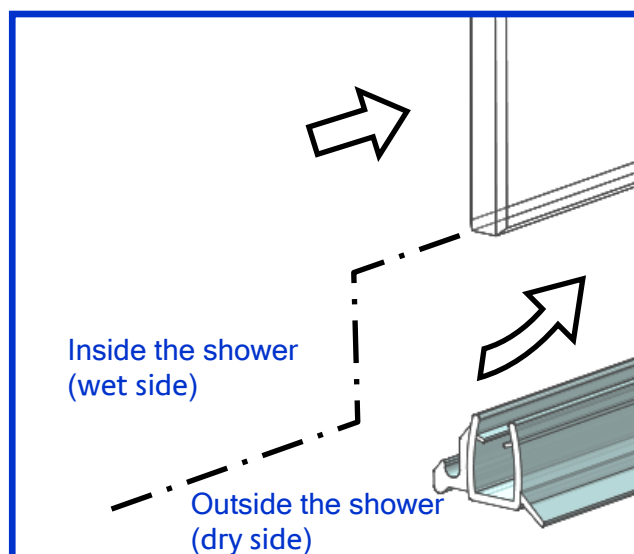
## Securing the slide adjustment and installing the bottom door seal

Using the same process as the last page drill (dia 3mm) holes into the top and bottom frames of the door to secure the slide adjustment and screw in the remaining 12mm screws, cup washers and screw caps.

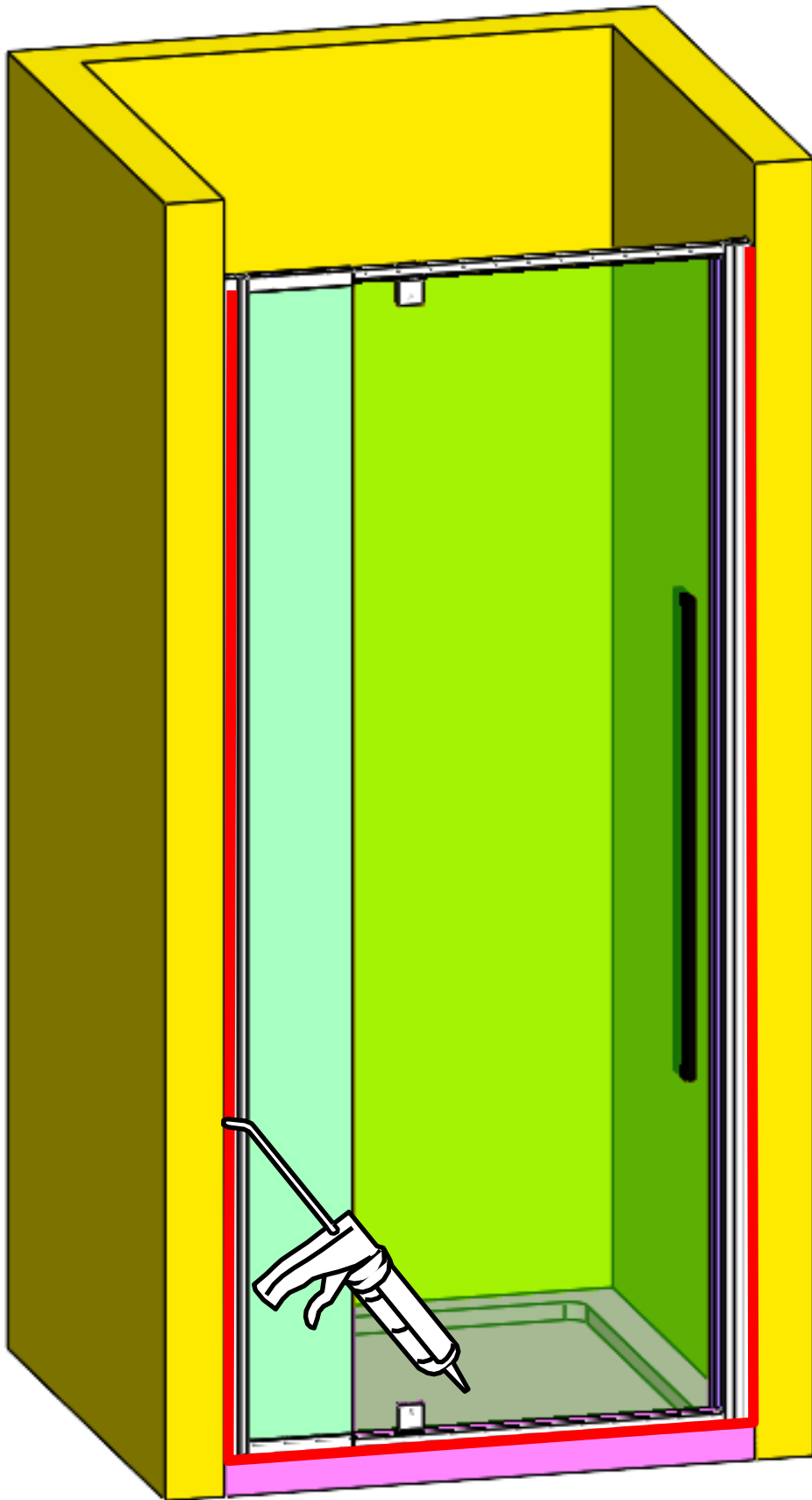


The door seal will be required to be cut into two separate pieces to allow for the hinge. You can wet the seal to help with installation.

Fit the seal to the bottom of the door glass by sliding along and upward. Please note the correct orientation of the seal in this picture.



Almost there, it's time to seal the shower door



Use of good quality silicone sealant.  
Cleaning / degreasing of all joint areas is recommended.  
Apply continuous silicone sealant bead EXTERNALLY ONLY